



**Program Year  
Deliverable Report  
July 1, 2023 – June 30, 2024**



**Texas Emergency Medical Task Force**

---

State Coordinating Office

Prepared by  
Michael Potts  
TX EMTF Assistant Program Director



**Page intentionally left blank**



# TABLE OF CONTENTS

## **Summary \_\_\_\_\_ - 6 -**

Program Highlights and Accomplishments for the 2024 Program Year \_\_\_\_\_ - 8 -

Looking ahead to the 2025 Program Year \_\_\_\_\_ - 8 -

## **Committees and Workgroups working \_\_\_\_\_ - 9 -**

IDRU Workgroup \_\_\_\_\_ - 9 -

AMBUS Workgroup \_\_\_\_\_ - 9 -

MMU & RNST Workgroup \_\_\_\_\_ - 10 -

Wildland Fire Support Workgroup \_\_\_\_\_ - 10 -

Operations Workgroup \_\_\_\_\_ - 10 -

Medical Directors Workgroup \_\_\_\_\_ - 11 -

Texas Mass-Fatality Operations Response Team Workgroup \_\_\_\_\_ - 11 -

Radiological Response Unit (RRU) Advisory Group \_\_\_\_\_ - 12 -

Regional Workgroup Activities \_\_\_\_\_ - 13 -

## **State Mission Assignments \_\_\_\_\_ - 14 -**

Storage Fire \_\_\_\_\_ - 15 -

2023 Statewide WLFS Response \_\_\_\_\_ - 15 -

LA WLFS EMAC \_\_\_\_\_ - 16 -

2024 Statewide Fire Response \_\_\_\_\_ - 17 -

Stephens County Bridge Damage \_\_\_\_\_ - 18 -

2024 Lunar Eclipse and Severe Weather \_\_\_\_\_ - 18 -

Civil Unrest \_\_\_\_\_ - 19 -

Severe Weather Support \_\_\_\_\_ - 20 -

Tropical Storm Alberto \_\_\_\_\_ - 20 -

After Action Items \_\_\_\_\_ - 21 -

Reimbursement \_\_\_\_\_ - 22 -

**Training and Exercising \_\_\_\_\_ - 23 -**

State Coordinating Office Training Activity \_\_\_\_\_ - 23 -

Infectious Disease Response Unit Training Activity \_\_\_\_\_ - 24 -

Recurring Training Activity \_\_\_\_\_ - 24 -

Regional Training Activity \_\_\_\_\_ - 25 -

**State Drill and Exercise Activity \_\_\_\_\_ - 26 -**

Wildland Fire Support Reveille Peak Ranch Exercise \_\_\_\_\_ - 26 -

TEEX Disaster Day Exercise \_\_\_\_\_ - 27 -

**State Coordinating Office Call-Down Drills \_\_\_\_\_ - 28 -**

**EMTF Regional Call-Down Drills \_\_\_\_\_ - 29 -**

**Acronyms and Abbreviations \_\_\_\_\_ - 30 -**

**TX EMTF Program Flyers [1-PAGERS] \_\_\_\_\_ - 35 -**



Achievements described in the following Program Year Deliverable Report are made possible by all the EMTF teams, HPP Providers, and Regional Advisory Councils, joining as a team and encouraging their emergency medical responders, hospitals, physicians, and countless others to combine assets and to selflessly support the eight Emergency Medical Task Force (EMTFs) that are organized and led by the State Coordinating Office. Individually and collectively each stand ready to help their neighbors and anywhere in Texas.

Special appreciation is extended to every member of each task force, along with the all the Regional Advisory Councils in Texas, the Texas Department of State Health Services and the Texas Division of Emergency Management, since all enable our eight EMTF's to unite in advance, during, and following disasters as "one team, one fight".  
#TXEMTF

*This publication was supported in part by the Administration for Strategic Preparedness and Response (ASPR) of the U.S. Health and Human Services as part of a financial assistance award and adheres to the terms and conditions for awards. The contents are those of the author(s) and do not necessarily represent the official views of, nor an endorsement, by ASPR, or the U.S. Government. Response activities were not funded by ASPR.*



**Page intentionally left blank**



# Summary

The purpose of this document is to provide a summary of the Program Year's activities, accomplishments, goals, and projects. The 2024 Program Year had an increased operational tempo from previous years as the State of TX increased operational preparedness and repositioning. The TX EMTF has continued to refine operations and build upon lessons learned from all activations while capturing best practices and improvement points from continued operations. TX EMTF continues to focus on membership to expand roster depth and increase capabilities.

[Please note, the Program Year is defined as July 1<sup>st</sup>, 2023, to June 30<sup>th</sup>, 2024]

TX EMTF by the Numbers:

8 EMTFs and a State Coordinating Office

27 State Mission Assignment Activations

2 State Exercises

12 Components

6 Courses conducted

Over 1,428 members participated in training

**242**

# of  
MOA'd  
Hospitals

**384**

# of  
MOA'd  
EMS/FD  
Agencies

**25**

# of  
MOA'd  
AIR MED  
Providers

**10**

# of  
MOA'd  
TMORT  
Entities

**14**

# of  
MOA'd  
Physician  
Groups

**701** # of TX EMTF  
MOA'd Entities



## Program Highlights and Accomplishments for the 2024 Program Year

- Continued refurbishing and replenishing our assets and caches using General Revenue dollars
- Maintained regularly scheduled Work Group Meetings
- Continued to update online resource library to include component documents and just-in-time training videos
- Implementation of Pulsara and TX Wristbands into EMTF Operations
- Maintained an increased operational tempo during the 2023 & 2024 Wildland Fire Seasons and 2024 Severe Weather season
- Completion of the AMBUS upgrade project
- Increased participation in Statewide exercises
- Began formalizing documentation with component specific Standard Operating Guidelines.

## Looking ahead to the 2025 Program Year

Core goals for each Work group:

- Evaluate Typing, Position Descriptions, and Job Action Sheets and update as needed
- Continue to build and update Activated Member Resource Folders
- Continue quality assurance initiatives through after action reviews and best practices
- Continue to share and communicate best practices
- Continue to encourage member participation in Workgroups and meetings

Additional 2025 Work Group Goals:

- Expand on information sharing on TX EMTF website
- Develop a Program Manual with position descriptions, typing for all deployable components, reimbursement parameters, etc.
- Implement standardized EMTF courses focusing on introduction to EMTF, deployment basics and systems and technology training.
- Continue to increase interoperable communications across all EMTF communications platforms
- Continue to replenish rosters and build roster depth and training for all components
- Continue to educate, train, and increase roster depth to support all mission profiles
- Implement inventory management systems for EMTF assets and caches





# Committees and Workgroups Working

The TX EMTF State Coordinating Office facilitates many workgroups, committees, and advisory councils, bringing together key stakeholders, task force leadership, EMTF Coordination teams, and members to ensure the program continues to improve and grow while maintaining consensus throughout. Below are the highlights and accomplishments from this Program Year's Workgroups, Committees, and Advisory Councils.

## IDRU Workgroup

*Chairs: Toby Hatton; Joshua Frandsen*  
*Ascension Health, EMTF 7; San Antonio FD, EMTF 8*

### Highlights and Accomplishments

Identified and procured gowns to replace aprons in all the IDRU caches

Goal: Continue to evaluate PPE ensembles based on industry standards and best practices.

Goal: Continue to maintain rosters for Pre-hospital and Hospital Augmentation teams

## AMBUS Workgroup

*Chairs: Sean Conley; Brett Joiner*  
*Atascocita FD, EMTF 6, MPV 6-01; San Antonio FD, EMTF 8, MPV 8-02*

### Highlights and Accomplishments

Continued development of AMBUS Driver Training in collaboration with TEEX.

Goal:  
Developed AMBUS Driver Course for the AMBUS 2.0

Goal:  
Develop Minimum Equipment Reference list

Goal:  
Develop Quarterly Capability report





## **MMU & RNST Workgroup**

*Chair: Chillon Montgomery*

*Methodist Healthcare, EMTF 8, MMU Group Supervisor*

### **Highlights and Accomplishments**

Finalized MMU supply cache updates in collaboration with Medical Director Work Group.

Selected and purchased replacement equipment for the iSTAT blood analyzers and IV Pumps for the MMU.

Goal: Identify and expand on regional and statewide training opportunities

Goal: Evaluate mechanism to efficiently rotate supply cache inventory

## **Wildland Fire Support Workgroup**

*Chairs: Kenneth Erben, Joshua Todd*

*Corpus Christi FD, EMTF 11, MEDL; Austin Travis County EMS, EMTF 7, MEDL*

### **Highlights and Accomplishments**

Expanded roster depth through training and recruiting

Continued to increase VHF radio communications capabilities

Goal: Develop performance rating for personnel and teams based on ICS forms 224 & 225 and process for distributing documentation

Goal: Collaborate with Texas A&M Forest Service on regional training opportunities

## **Operations Workgroup**

*Chair: Chillon Montgomery*

*Methodist Healthcare, EMTF 8, MIST*

### **Highlights and Accomplishments**

Goal: Continue to evaluate and adjust EMTF Operations Organization Structure

Goal: Develop standardized EMTF 101 and Deployment Basics Training processes

## Medical Directors Workgroup

*Chair: Dr. Emily Kidd*

*Acadian Ambulance Service, TX EMTF Medical Director*

### Highlights and Accomplishments

Assess the durable medical equipment capabilities to maintain standards of care and made recommendations for the replacement of ISTAT blood analyzer and IV pumps.

Goal: Develop Wildland Fire Support 'Rehab. Guideline Recommendations'

Goal: Establish CLIA Lab Director for the EMTF in coordination with the SCO

## Texas Mass-Fatality Operations Response Team Workgroup

*Chair: Dr. Jason Wiersma*

*Harris County Institute of Forensic Sciences; EMTF 6*

### Highlights and Accomplishments

Completed TMORT General Orientation.

Completed updates of Position Descriptions.

Participation in statewide exercises

10 TMORT MOAs fully executed, working with several jurisdictions to execute MOAs

Goal: Continue recruitment and education about TMORT and its capabilities

Goal: Update Typing and JAS as needed.

Goal: Expand Information sharing on the TX EMTF website



# Radiological Response Unit (RRU) Advisory Group

Based on a request from DSHS, the twelfth (12th) TX EMTF Component, the Radiological Response Unit (RRU), was formed. This component was created to support local jurisdictions with decontamination, detection, and dosimetry for the care of individuals impacted by a radiological event.

TX EMTF held two advisory group meetings focusing on equipment identification and core mission capabilities. Further development of the RRU will take place in PY 2025 focusing on caches of supplies and equipment distribution, training, and implementation.

## Equipment identification

- Cache Inventories and Distribution
- 8 Primary RRU Caches
  - [located in each of the 8 EMTFs]
- 4 Secondary RRU Caches
  - [located in EMTFs 2,6,7,8]

## Scenario based development of

- Mission Parameters ["Swim Lanes"]
- Team Composition [19 Personnel/OP]
  - Group Supervisor, MIST, Logistics Technicians, HAZMAT Technicians, RNST, Paramedics, Nuclear Medicine Technicians/Radiation Safety Specialists
- Training Courses Identified

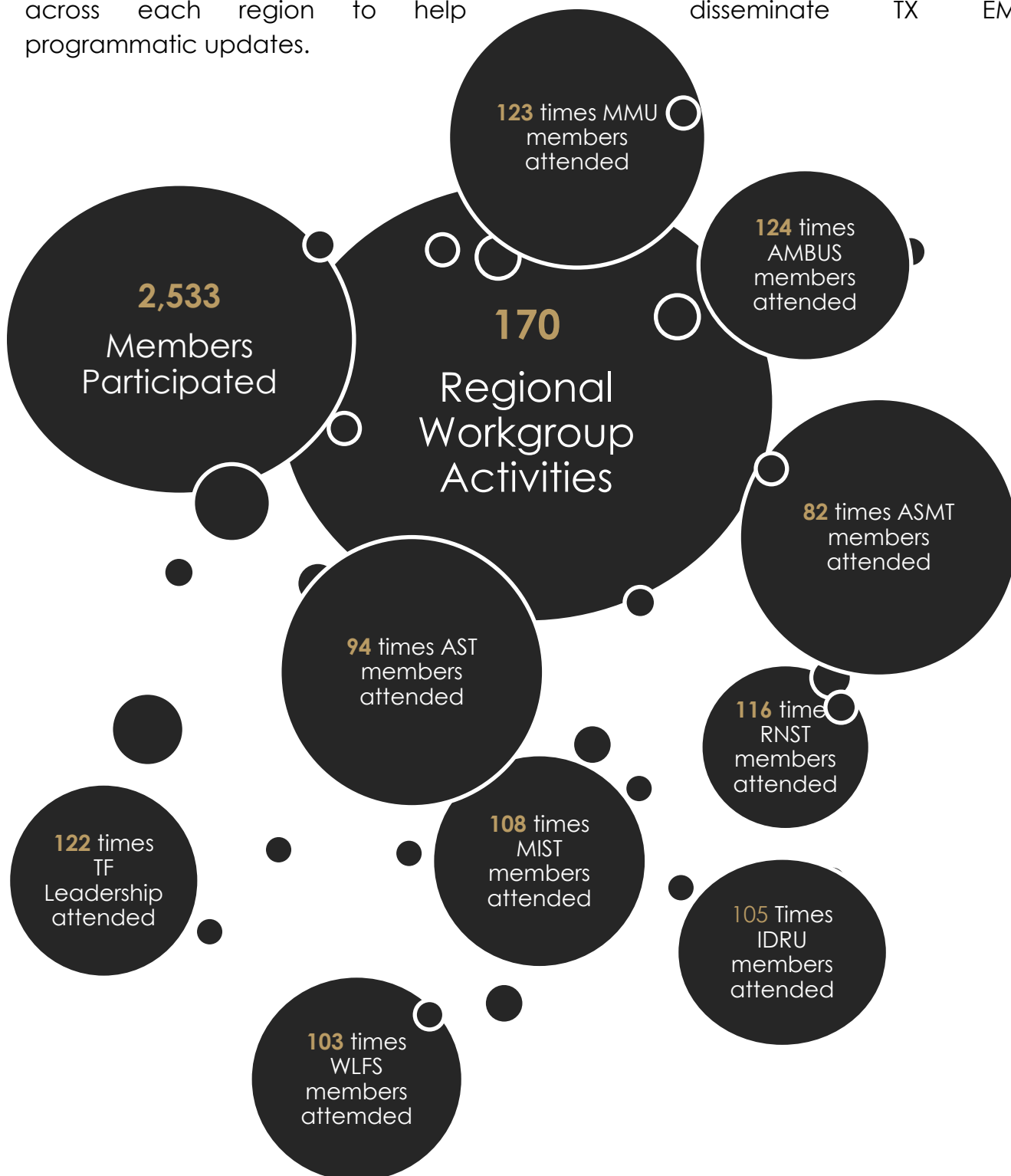
## Next Steps:

- Build and distribute caches
- Develop a Survey, Identify Resources, Reference Guides, POCs
- Recruit, Roster SMEs
- ID Potential Gaps: Training, Medical Counter Measures Cache, Additional Equipment/Supplies,
- Advisory Committee Meeting Cadence; Development of a RRU WG



## Regional Workgroup Activities

In addition to State workgroup activity, regional member workgroups met to conduct many essential functions to maintain readiness. The regional workgroups train, develop, and conduct exercises, work on regional plans, participate in state workgroup projects, while also providing a forum to pass on new or developing action items from state meetings. We also take advantage of existing membership meetings across each region to help disseminate TX EMTF programmatic updates.

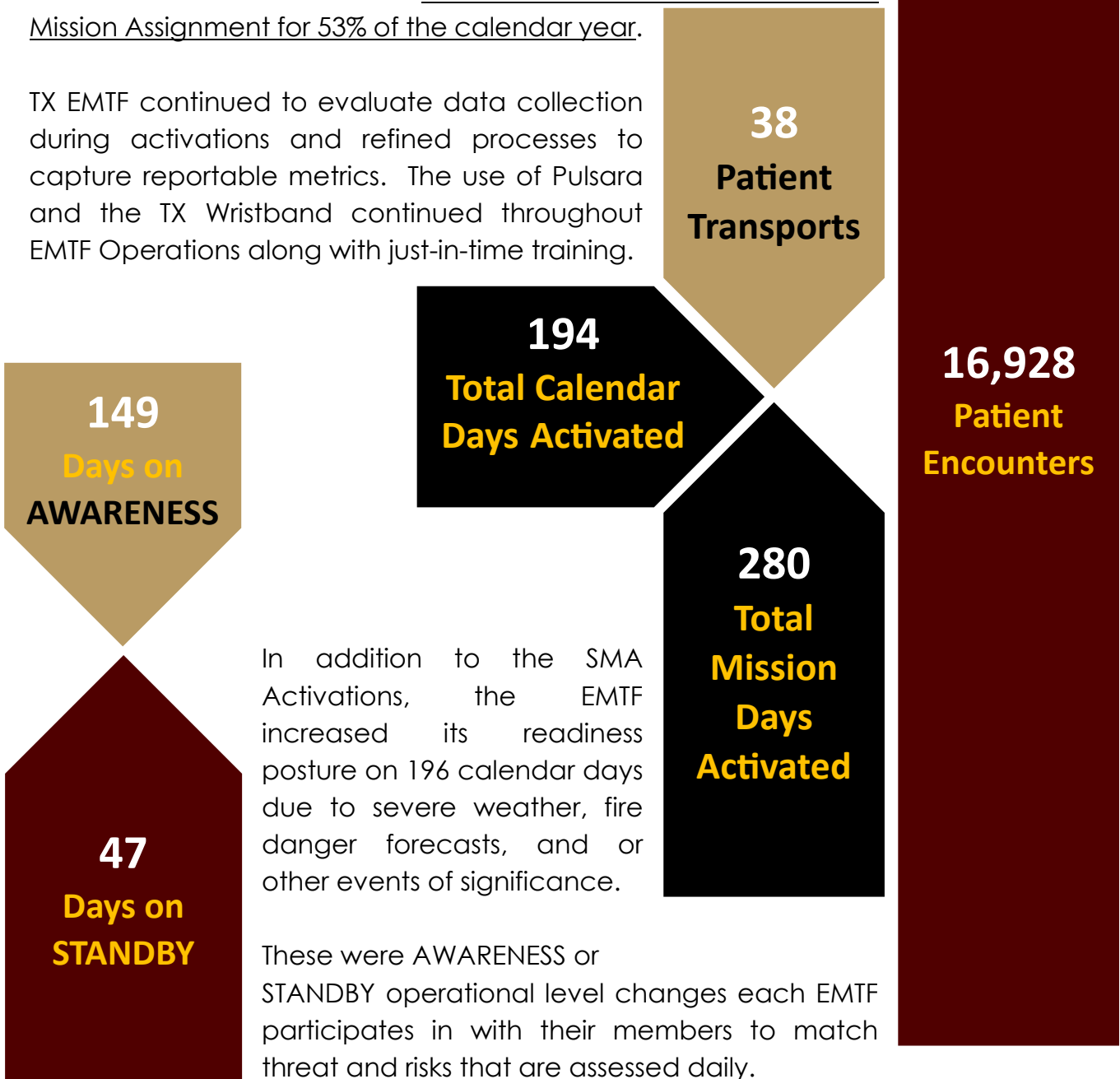




# State Mission Assignments

This program year there were 27 State Mission Assignment (SMA) Activations issued by DSHS. The program year saw an increase in Wildland Fire Support (WLFS) missions, both for prepositioning in advance due to wildfire risk and for mission assignments to existing fires supporting state fighting resources within a Texas A&M Forest Service Region. TX EMTF also received its first EMAC mission for WLFS to the State of Louisiana. Along with the increase in WLFS missions there was also an increase in prepositioning for severe weather and other weather-related activations. TX EMTF was activated on a State Mission Assignment for 53% of the calendar year.

TX EMTF continued to evaluate data collection during activations and refined processes to capture reportable metrics. The use of Pulsara and the TX Wristband continued throughout EMTF Operations along with just-in-time training.



In addition to the SMA Activations, the EMTF increased its readiness posture on 196 calendar days due to severe weather, fire danger forecasts, and or other events of significance.

These were AWARENESS or STANDBY operational level changes each EMTF participates in with their members to match threat and risks that are assessed daily.



## Storage Fire

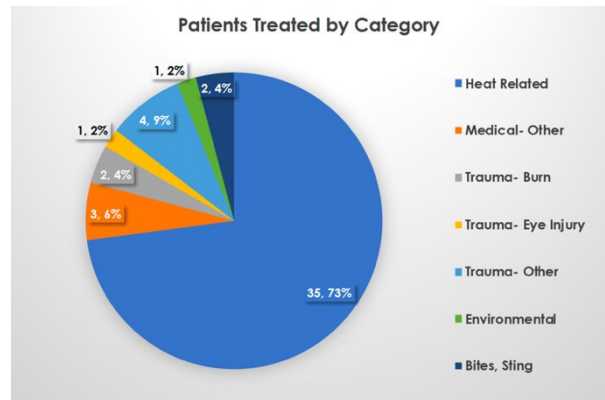
Dates: July 1 to July 5, 2023  
 Location: Palo Pinto County (EMTF 2)  
 Components Activated: 2 MEDL, 2 AST Unit, 2 WPU  
 Number of Personnel: 10  
 Number of Assets: 6  
 EMTFs Participating: EMTFs 2, 7, 8  
 Number of Encounters: 129  
 Number of Patients Treated: 0  
 Number of EMS Transports: 0

## Incident Summary

TX EMTF resources were activated to provide medical support to wildland firefighting operations of the Storage Fire.

## 2023 Statewide WLFS Response

Dates: July 14 to September 16, 2023  
 Location: Statewide  
 Peak Components Activated: 10 MEDL, 8 AST Unit, 8 WPU, 2 REM  
 Total Number of Personnel: 199  
 EMTFs Participating: All EMTF's and the SCO  
 Total Fires Responded to: 82  
 Number of Encounters: 11,524  
 Number of Patients Treated: 50  
 Number of EMS Transports: 5



## Incident Summary

TX EMTF resources were activated and paired with wildland firefighting assets to respond to wildland fires across the State due to drought conditions and excessive heat. These combined resources were strategically placed based on needs identified by the TAMFS to rapidly respond to reported wildfires.





## LA WLFS EMAC

*Dates: August 25 to September 6, 2023*

*Location: State of LA*

*Peak Components Activated: 1 TFL, 4 MEDL, 3 AST Unit, 3 WPU*

*Total Number of Personnel: 20*

*EMTFs Participating: EMTFs 2, 4, 6, 7, 8, 11 and the SCO*

*Total Fires Responded to: 4*

*Number of Encounters: 1,174*

*Number of Patients Treated: 1*

*Number of EMS Transports: 0*

## Incident Summary



TX EMTF resources were activated and paired with TX wildland firefighting assets to respond to wildland fires across southern LA due to drought conditions and excessive heat. These combined resources were assigned to rapidly respond to reported wildfires with LA and Federal assets. This was the TX EMTF's first EMAC Mission!





## 2024 Statewide Fire Response

*Dates: February 27 to June 21, 2024*

*Location: Western Third of the State of TX (EMTFs 1,2,9)*

*Peak Components Activated: 5 MIST,*

*9 MEDL, 11 AST Units, 11 WPU, 2 REM*

*Number of Personnel: 185*

*EMTFs Participating: All EMTFs and the SCO*

*Number of Encounters: 4,180*

*Number of Patients Treated: 4*

*Number of EMS Transports: 0*

### Incident Summary

TX EMTF resources were activated for a wildland fire outbreak and assigned to the Smoke House Creek, Windy Deuce, Grape Vine Creek fires in EMTF 1 to provide medical support to wildland firefighting operations. Once released from these fires EMTF assets were paired with wildland firefighting assets to respond to wildland fires across the State due to increased fire weather conditions. These combined resources were strategically placed based on needs identified by the TAMFS to rapidly respond to reported wildfires.





## Stephens County Bridge Damage

*Dates: December 23 to December 29, 2023*

*Location: Stephens County, TX (EMTF 2)*

*Components Activated: 2 AST Units*

*Number of Personnel: 4*

*Number of Assets: 2*

*EMTFs Participating: EMTF 2*

*Number of Encounters: 1*

*Number of Patients Treated: 1*

*Number of EMS Transports: 1*



### Incident Summary

TX EMTF resources were activated to provide EMS response to a portion of Stephens County that was separated by a bridge determined to be structurally unsafe. This bridge created excessive response and transport times with EMTF assets utilized to provide response until the jurisdiction could appropriately plan to resume serve.

## 2024 Lunar Eclipse and Severe Weather

*Dates: April 6 to April 11, 2024*

*Locations: Brazos, Brown and Sutton Counties, TX (EMTF 2)*

*Components Activated: 6 TFL, 18 MIST, 3 AST, 3 AMBUS*

*Number of Personnel: 79*

*Number of Assets: 48*

*EMTFs Participating: EMTFs 1, 2, 4, 6, 7, 8, 11 and SCO*

*Number of Encounters: 0*

*Number of Patients Treated: 0*

*Number of EMS Transports: 0*

### Incident Summary

TX EMTF resources were activated to provide EMS response to jurisdictions identifying potential impacts due to increased population for viewing the Eclipse. EMTF assets were assigned to preposition to Sutton, Brazos and Brown Counties with MIST assigned to provide LNO support to potentially impacted jurisdictions and Regional Medical Operations Centers. TX EMTF assets remained activated and prepositioned due to forecasted high impactful severe weather.



## Civil Unrest

Dates: April 24 to May 21, 2024

Location: Austin, TX Travis County (EMTF 7)

Components Activated: 2 MIST, 1 AST with TAC MED capabilities and 1 AMBUS

Number of Personnel: 49

Number of Assets: 10

EMTFs Participating: EMTFs 4, 7, 8, 11 and SCO

Number of Encounters: 5

Number of Patients Treated: 0

Number of EMS Transports: 0

## Incident Summary

TX EMTF resources were activated to provide medical support to Law Enforcement in a tactical response setting due to protest and civil unrest. EMTF assets coordinated prepositioning and response with the City of Austin, University of TX and TX DPS assets with MIST assigned to provide LNO support to the Authority having Jurisdiction.







## Severe Weather Support

Dates: May 1 to June 1, 2024

Location: Austin, TX Travis County (EMTF 7)

Peak Components Activated: 6 TFL, 19 MIST, 3 AST, 3 AMBUS

Number of Personnel: 142

EMTFs Participating: EMTFs 2, 4, 6, 7, 8, 11 and SCO

Number of Encounters: 234+

Number of Patients Treated: 54+

Number of EMS Transports: 35

### Incident Summary

TX EMTF resources were activated to preposition for Severe Weather to SE TX and assigned to areas impacted by excessive rainfall and severe weather. This timeframe also includes the no-notice activation of EMTF assets from EMTF 2 to respond to the Valley View Tornado in Cooke County.



## Tropical Storm Alberto

Dates: June 17 to June 25, 2024

Location: Pharr and Corpus Christi (EMTF 11)

Peak Components Activated: 6 TFL, 19 MIST, 3 AST, 3 AMBUS

Number of Personnel: 142

EMTFs Participating: 1, 2, 4, 9 and SCO

Number of Encounters: 0

Number of Patients Treated: 0

Number of EMS Transports: 0

### Incident Summary

TX EMTF resources were activated to preposition for the potential impacts from Tropical Storm Alberto. EMTF assets were released with no noted activity.



## After Action Items

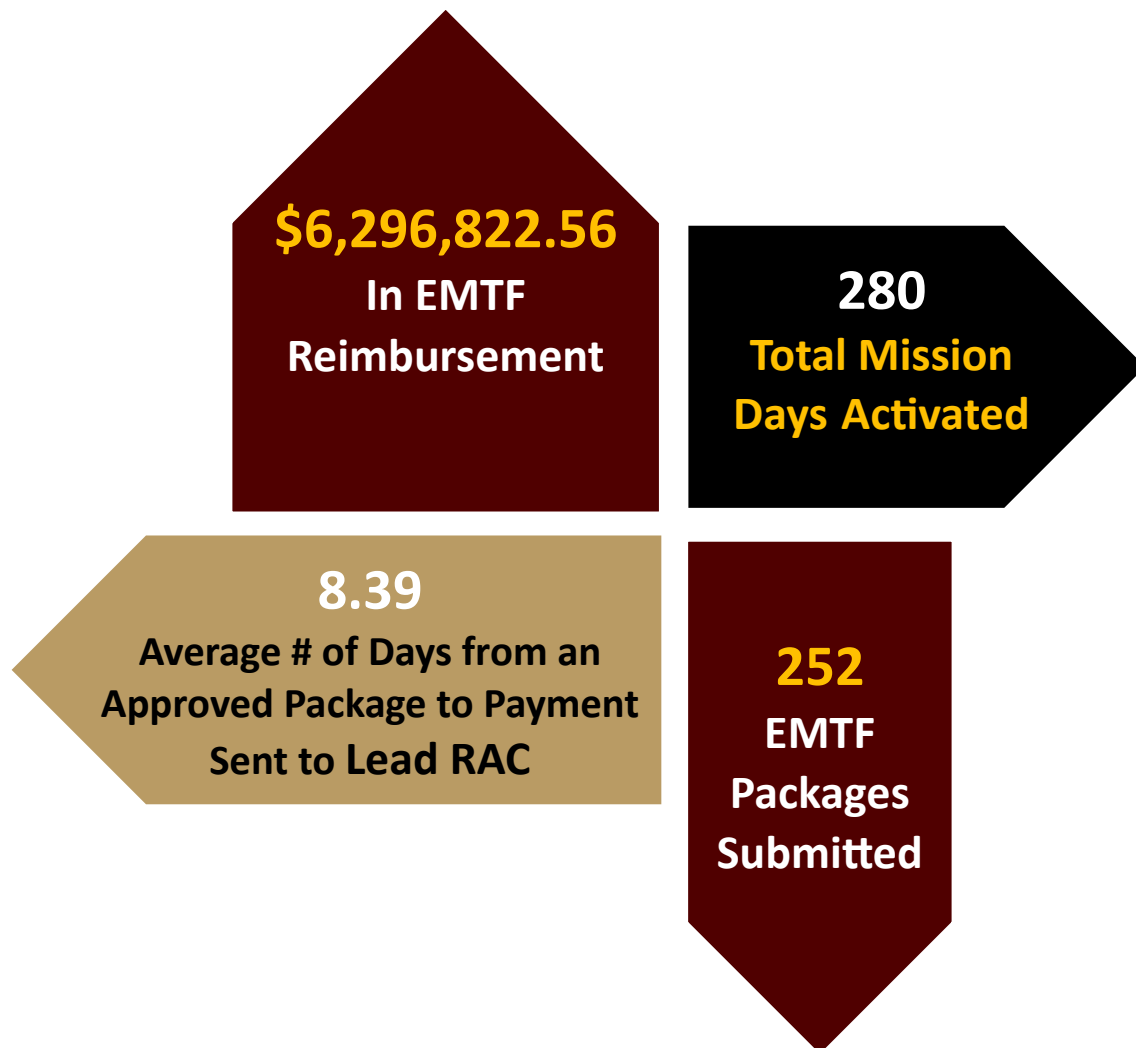
The following are 2024 Program Year After Action Items obtained by surveys and Work Group discussions:

- Training, Training, Training
  - Increase training opportunities for all components
    - Collaborate with state response partners on statewide training
    - Collaborate with regional partners on regional training
  - Develop and implement training plan designed to provide members with TX EMTF specific training and education objectives
    - TX EMTF Program Awareness
    - Basic Deployment Education
      - Packing
      - Rostering
      - Convoy Traveling
      - Mission Profiles
      - Documentation
      - Demobilization
    - Develop Component Specific Training
      - MMU Operations
      - MMU Logistics
      - TAC MED Operations
    - TX EMTF Systems and Applications
      - WAVE
      - Asset Trak
      - WebEOC
      - Pulsara
      - Star Link
      - MSAT
- Resource Management
  - Clearly define statuses and processes for tracking resources in WebEOC
- Processes
  - Continue to evaluate processes and develop plans to create efficiencies where they exist



## Reimbursement

The TX EMTF reimbursement parameters and processes continues to be a best practice. The SCO and DSHS SMOC Finance Team collaborated to adapt the TDEM reimbursement forms to meet TX EMTF reimbursement parameters. The forms, processes, and parameters that were created and tested that make for clear, consistent, and timely reimbursement for our members that deployed to support the State of Texas. The EMTF Program, in conjunction with the DSHS, are committed to timely reimbursement to Sponsoring Entities that provide resources and personnel in times of disaster. Sponsoring Entities are encouraged to file their reimbursement packets through their designated RAC as quickly as possible to ensure timely reimbursement from DSHS. Reimbursement for costs associated with EMTF activities will be processed and paid within 45 days. The 45-day reimbursement timeline will begin only after a completed reimbursement packet is accepted by the DSHS. The Reimbursement Parameters are currently being updated to provide better details to support our members.



# Training and Exercising

## State Coordinating Office Training Activity

This program year we provided TX EMTF training opportunities for our team members. This allowed us to add to and maintain our rosters as well as maintain competencies across many disciplines. For the PY 2024 the MIST curriculum was evaluated and refreshed for future deliveries. The following provides some details regarding the courses the TX EMTF SCO offered this program year.

### Medical Incident Support Team Development

Type: Review & Development

Number of Sessions: 2

Number Attended: 42

Locations: Austin & Grapevine

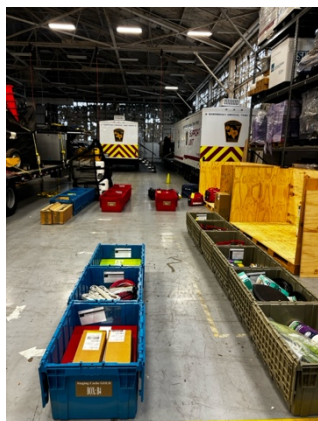
### Ambulance Staging Management Team Course

Type: Initial

Number of Courses: 1

Number Trained: 32

Location: San Antonio



### TMORT Orientation

Type: Initial

Number of Courses: 1

Number Trained: 22

Location: Houston





# Infectious Disease Response Unit Training Activity

Program Year 2023 saw a declared Ebola Virus Disease outbreak declared in Africa by the World Health Organization. TX EMTF increased training to improve response capabilities and competencies.

IDRU Hospital Augmentation Team

Type: Initial

Number of Courses: 2

Number Trained: 15

Locations: DFW

**41 SCO Led Training Opportunities Completed**

## Recurring Training Activity

WebEOC Training

Type: Initial/Refresher

Number of Courses: 22

Number Trained: 165

Locations: Statewide [virtual]

Monthly Pulsara Training

Type: Initial/Refresher

Number of Courses: 12

Number Training Patients entered: 803

Locations: Statewide [virtual]

Monthly MSAT Drills

Type: Recurring

Number of Drills: 11

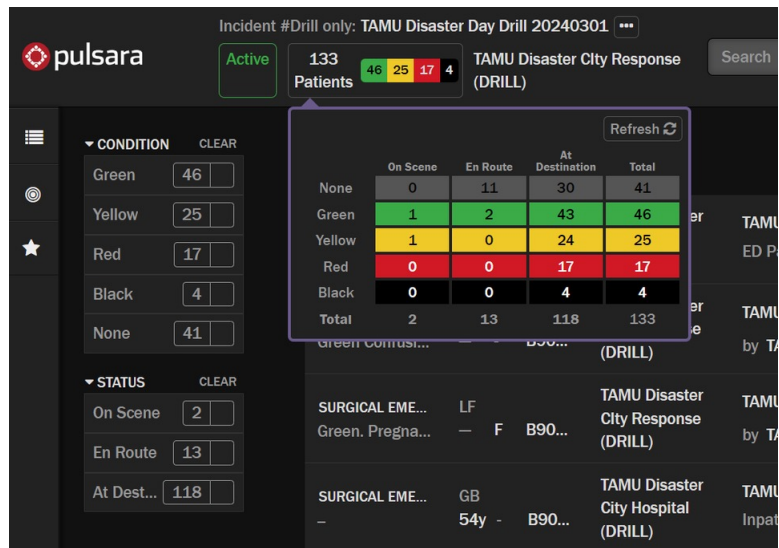
Number of Positive Contacts: 405

Monthly Wave Drills

Type: Recurring

Number of Drills: 6

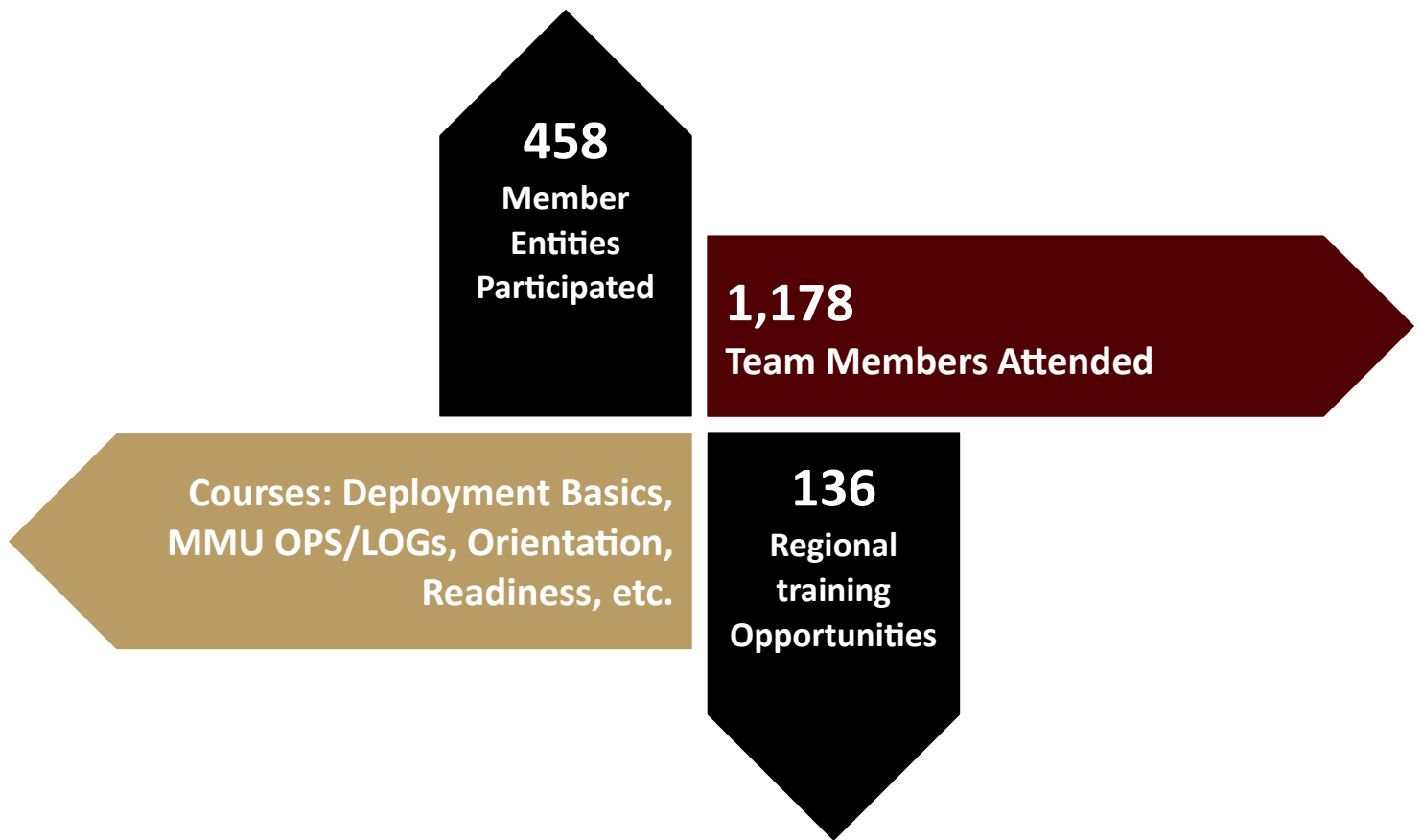
Number of Participants: 93





## Regional Training Activity

Regional training is ongoing from year to year and is what maintains our rosters, team members' competencies, updates the teams on new gear or processes, and makes us better and faster at responding. Every region in the EMTF program provides training, from courses on deployment basics to MMU operations to reimbursement. In addition to participating in all the above training opportunities, the regions conducted 60 training opportunities for their members this program year.



# State Drill and Exercise Activity

For Program year 2024, the TX EMTF sponsored two [2] Statewide exercise opportunities as detailed below. These training opportunities were made available to all TX EMTF members and included WLFS components, Overhead teams, MMU staff and AMBUS. These [2] training events were occurring simultaneously with WLFS State Mission Assignments.

## Wildland Fire Support Reveille Peak Ranch Exercise

*Dates: February 27 – March 2, 2024*

*Location: Reveille Peak Ranch Marble Falls, TX (Burnet County) EMTF 7*

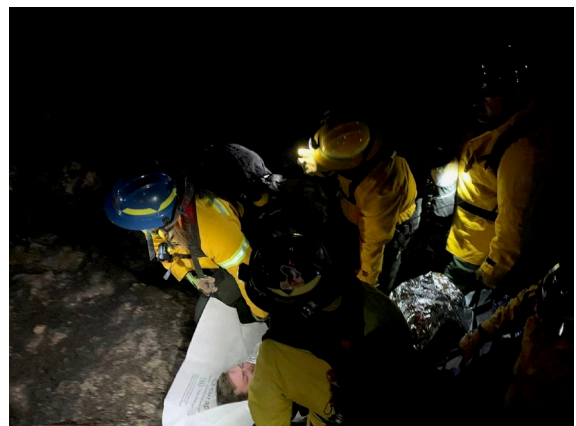
*Components Activated: [8] MEDL, [8] WPU, [2] REM*

*Number of Personnel: 48*

*Number of Assets: 20*

*EMTFs Participating: EMTF 1,2,4,6,7,8,9,11*

TX EMTF collaborated with the Texas A&M Forest Service on a training exercise at Reveille Peak Ranch. The exercise consisted of didactic training on communications, land navigation and helicopter operations with multiple scenarios designed to test communications, response coordination and extraction from a wildland environment.



# TEEX Disaster Day Exercise

Dates: February 29, 2024

Location: TEEX Disaster City College Station, TX (Brazos County) EMTF 7

Components Activated: [4] TFL, [6] MIST, [1] AMBUS, [1] 2.0 MMU w/ Logistics Staff and [3] TMORT Staff

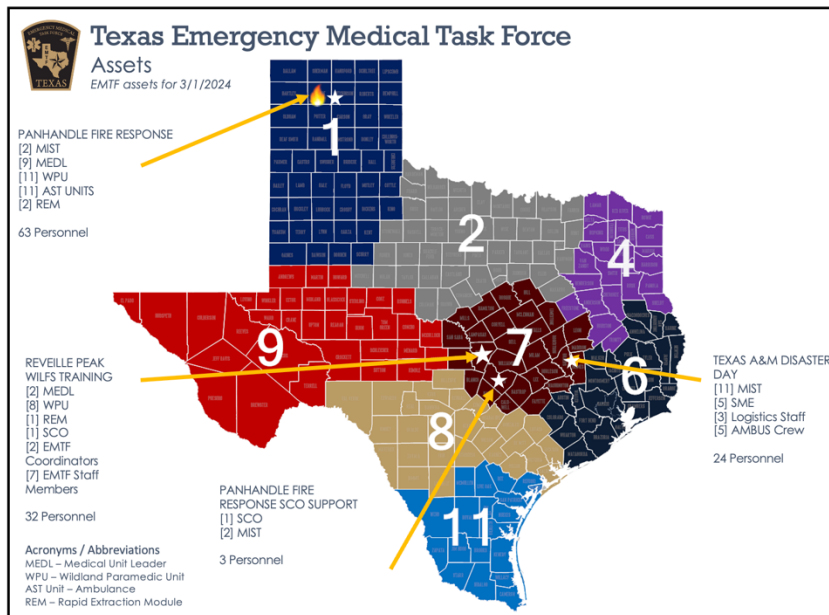
Number of Personnel: 22

Number of Assets: 2

EMTFs Participating:

EMTF 2,4,6,7,8

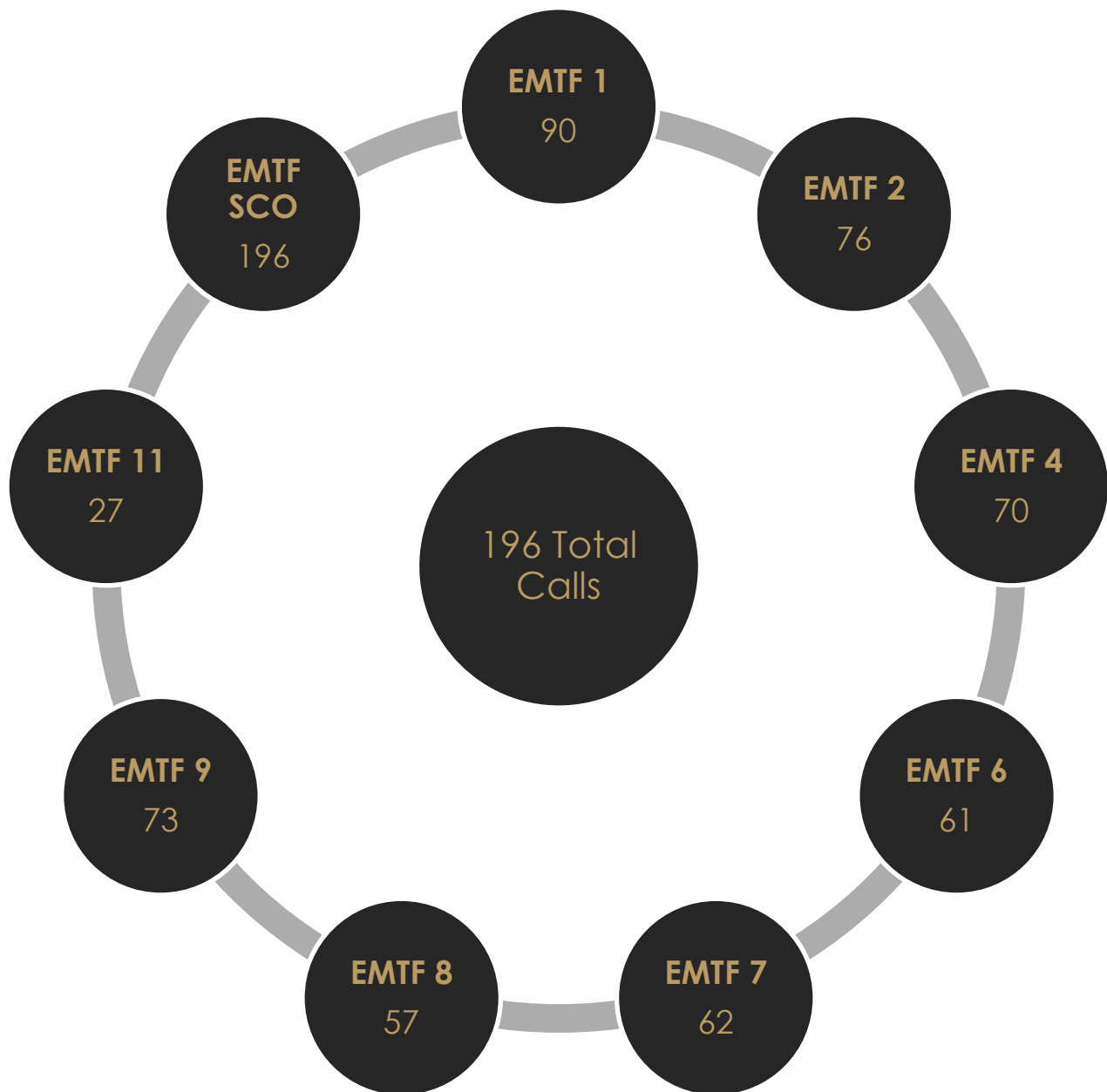
TX EMTF collaborated with the students and planning personnel from Texas A&M University on a training exercise at TEEX Disaster City. The exercise was scenario driven from students with TX EMTF staff providing exercise support and assets for the day of the exercise.





# State Coordinating Office Call-Down Drills

The SCO conducts unannounced call-down drills with each of the eight EMTF Coordination Centers at least quarterly. This is to test the 24/7 contacts for the Coordination Centers via phone, email, and the Regional EMTF Coordinator. Each region maintains a 24/7 contact phone number and an email distribution list address for official State Mission Assignment traffic and intelligence. At a minimum, each of these contact methods are tested twice a year however real-world call-downs are also included. Here are the results of this Program Year's tests and live call-down results.







# EMTF Regional Call-Down Drills

Each EMTF Region also conducts call-down drills. These drills test notification systems and processes to verify contact information, update rosters, and ensure we can activate personnel and assets as quickly as possible. These drills are conducted unannounced and at a minimum, semi-annually. We ask that our members and points of activation provide us with 24/7 contact information so we can reach them at any time. We also capture real activation call-down information so we can track our notification system efficacy.

**88**  
Call-Downs  
for Real-  
World  
Activations

**215** Call-Down Drills Completed

Methods Include:  
Phone, Text, Email, MSAT

**10,735**  
Times  
Positive  
Contact was  
Made

**865**  
Times Regional  
Components  
Were Drilled

**873**  
Call-Down Drills Met Rostering  
Expectations



**Page intentionally left blank**

# Acronyms and Abbreviations

AAR – After Action Review/Report  
ACS – Alternate Care Site  
AHJ – Authority Having Jurisdiction  
ALS – Advanced Life Support  
AMBUS – Ambulance Bus  
AO – Area of Operations; Operational Area  
AOR – Area of Responsibility  
AMST – Air Medical Strike Team  
ASMT – Ambulance Staging Management Team  
AST – Ambulance Strike Team  
ASTL – Ambulance Strike Team Leader

BLS – Basic Life Support  
BOO – Base of Operations

CDC – Centers for Disease Control & Prevention  
CERT – Community Emergency Response Team  
CI/KR – Critical Infrastructure and Key Resources  
CISM – Critical Incident Stress Management

DC – District Coordinator  
DDC – Disaster District Committee/Chair  
DHS – U.S. Department of Homeland Security  
DMAT – Disaster Medical Assistance Team  
DMORT – Disaster Mortuary Operational Response Team  
DPMU – Disaster Portable Morgue Unit  
DPS – Texas Department of Public Safety  
DSHS – Texas Department of State Health Services

EM – Emergency Management  
EMAC – Emergency Management Assistance Compact  
EMTF – Emergency Medical Task Force  
EOC – Emergency Operations Center  
EOP – Emergency Operations Plan  
ESF – Essential Support Function

FEMA – Federal Emergency Management Agency  
FOD – Foreign Objects and Debris  
FOGS – Forward Operating Group Supervisor

GRP SUP / GS – Group Supervisor

HAZMAT – Hazardous Materials  
HHS – U.S. Department of Health and Human Services



HR – Human Remains  
HSR – Health Service Region

IAP – Incident Action Plan  
IC – Incident Commander  
ICP – Incident Command Post  
ICS – Incident Command System  
IMT – Incident Management Team

JIT – Just in Time

LHA – Local Health Authority  
LHD – Local Health Department

MCI – Mass Casualty Incident  
MEDL – Medical Unit Leader  
MERC – Mortuary Enhanced Remains Cooling System  
MICU – Mobile Intensive Care Unit  
MIST – Medical Incident Support Team  
MISTL – Medical Incident Support Team Leader  
MMU – Mobile Medical Unit  
MOA – Memorandum of Agreement  
MOC – Medical Operations Center  
MPV – Multi-Patient Vehicle  
MRP – Mission Ready Package

NDMS – National Disaster Medical System  
NIMS – National Incident Management System  
NRF – National Response Framework  
NRP – National Response Plan

OEM – Office of Emergency Management  
OPS MGR – Operations Manager

PIO – Public Information Officer  
POA – Point of Activation  
POC – Point of Contact  
POD – Point of Distribution

QRF – Quick Response Force

RAC – Regional Advisory Council  
RMOC – Regional Medical Operations Center  
RNST – Registered Nurse Strike Team  
RNSTL – Registered Nurse Strike Team Leader  
RRU – Radiological Response Unit





SAR – Search and Rescue  
SCO – State Coordinating Office  
SMA – State Mission Assignment  
SMOC – State Medical Operations Center  
SO – Safety Officer  
SOC – State Operations Center  
SOG – Standard Operating Guidelines  
SOP – Standard Operating Plan  
STAR – State of Texas Assistance Request  
STL – Strike Team Leader

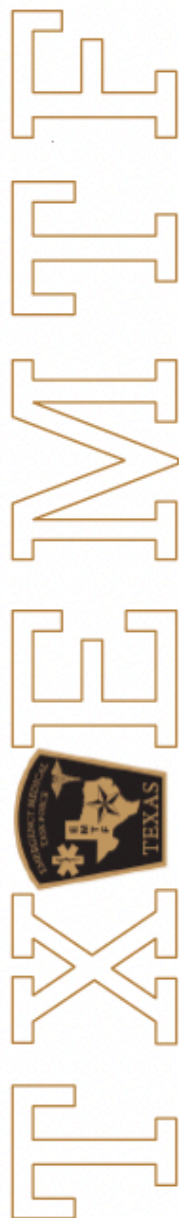
TACMED – Tactical Medic/Medicine  
TDEM – Texas Division of Emergency Management  
TDMS – Texas Disaster Medical System  
TDVR – Texas Disaster Volunteer Registry  
TFL – Task Force Leader  
TFS – Texas A&M Forest Service  
TMD – Texas Military Department  
TMORT – Texas Mass Fatality Operational Response Team  
TSA – Trauma Service Area  
TSICP - Texas Statewide Interoperability Channel Plan  
TX EMTF – Texas Emergency Medical Task Force  
TX ETN – Texas Emergency Tracking Network  
TXMF – Texas Military Forces

WLFS – Wildland Fire Support  
WPU – Wildland Paramedic Unit



**Page intentionally left blank**










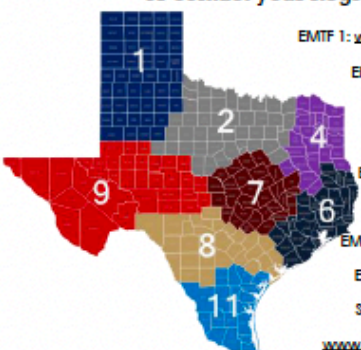


# TX EMTF Program Flyers [1-PAGERS]



## Texas Emergency Medical Task Force

### Component Overview

The TX EMTF Program is a series of components that activate resources on behalf of Texas on a State Mission Assignment [SMA] that provides a custom, scalable approach to medical disaster response. The key to the program is the ability to activate our members from EMS & fire departments, public and private healthcare organizations, regional coalitions, & state and local government who provide personnel & assets that activate during disasters.

<ul style="list-style-type: none"> <li>• Medical Incident Mgmt. Personnel Augmenting Operations Centers &amp;/ Command Posts</li> <li>• Subject Matter Experts &amp; Leaders in the ESF-8, Health &amp; Medical Arena</li> </ul> <p><b>Medical Incident Support Team</b></p> 	<ul style="list-style-type: none"> <li>• Public Safety Logistics Subject Matter Experts in Staging Large Numbers of Assets</li> <li>• Manages the Staging Site, Mobilization, &amp; Tracking of Activated ESF-8 Resources</li> </ul> <p><b>Ambulance Staging Mgmt. Team</b></p> 	<ul style="list-style-type: none"> <li>• Custom Multi-Patient Vehicles with a Transport Capability of 20+ Patients</li> <li>• Care &amp; Mass Transport / Evacuation of Injured / Ill</li> <li>• REHAB / Force Protection for Responders</li> </ul> <p><b>AMBUS / MPV</b></p> 
<ul style="list-style-type: none"> <li>• Temporary Healthcare Infrastructure that Rapidly Deploys &amp; Provides High Quality Patient Care in the Field</li> <li>• Deployable Emergency Room with Scalable Teams &amp; Assets</li> </ul> <p><b>Mobile Medical Unit</b></p> 	<ul style="list-style-type: none"> <li>• Teams of 5 Ambulances with a Strike Team Leader</li> <li>• Supplemental Medical Transport of Large-Scale Patient Movement Missions</li> </ul> <p><b>Ambulance Strike Team</b></p> 	<ul style="list-style-type: none"> <li>• Teams of 5 Nurses with a Strike Team Leader</li> <li>• Augment Nursing Staff Shortages in Disasters that are Specialty Specific (ED, ICU, Burn, etc.)</li> </ul> <p><b>Registered Nurse Strike Team</b></p> 
<ul style="list-style-type: none"> <li>• Provide Assistance with Site, Morgue, Victim Identification &amp; Information Center Operations to Medicolegal Authorities in a Mass Fatality Incident</li> </ul> <p><b>Mass Fatality Operations Response Team</b></p> 	<ul style="list-style-type: none"> <li>• Deployable Pre-Hospital &amp; Hospital Teams Capable of Caring for &amp;/ Transporting a HCID Patient</li> <li>• PPE Caches Pre-Positioned Across the State</li> </ul> <p><b>Infectious Disease Response Unit</b></p> 	<ul style="list-style-type: none"> <li>• Teams of 5 Air Ambulances with a Strike Team Leader</li> <li>• Supplemental Medical Transport for Critical and Large-Scale Patient Movement Missions</li> </ul> <p><b>Air Medical Strike Team</b></p> 
<p><b>For more information, visit <a href="http://www.TXEMTF.org">www.TXEMTF.org</a> or contact your Regional Coordinator:</b></p> <p>EMTF 1: <a href="http://www.PanhandleRAC.com">www.PanhandleRAC.com</a></p> <p>EMTF 2: <a href="http://www.NCTRAC.org">www.NCTRAC.org</a></p> <p>EMTF 4: <a href="http://www.RACoG.org">www.RACoG.org</a></p> <p>EMTF 6: <a href="http://www.SFRAC.org">www.SFRAC.org</a></p> <p>EMTF 7: <a href="http://www.CATRAC.org">www.CATRAC.org</a></p> <p>EMTF 8: <a href="http://www.STRAC.org">www.STRAC.org</a></p> <p>EMTF 9: <a href="http://www.BorderRAC.org">www.BorderRAC.org</a></p> <p>EMTF 11: <a href="http://www.CBRAC.org">www.CBRAC.org</a></p> <p>State Coordinating Office: <a href="http://www.TXEMTF.org">www.TXEMTF.org</a> #TXEMTF</p> 	<ul style="list-style-type: none"> <li>• Dedicated Medical Response &amp; Force Protection Teams &amp; Assets for Firefighters Working Moderate- to Large-Scale Wildland Fires</li> <li>• Covering the Fireline to Staging &amp; Base Camps to Incident Command Posts</li> </ul> <p><b>Wildland Fire Support Unit</b></p> 	<ul style="list-style-type: none"> <li>• Dedicated Medical Support for Law Enforcement Entities During High Risk Incidents</li> <li>• Specialized Teams of 2 Paramedics / APPs / Physicians &amp; an ALS / MICU Ambulance</li> </ul> <p><b>Tactical Medic Support Unit</b></p> 





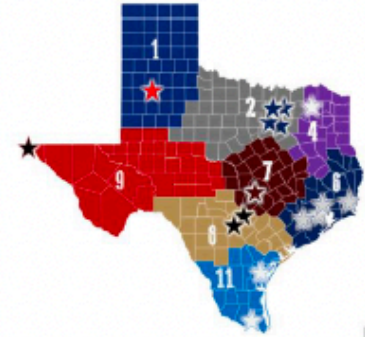
## Texas Emergency Medical Task Force

Component Overview



### AMBUS / MPV

[Ambulance Bus / Multi-Patient Vehicle]



#### MISSION

- Primary mission is to provide advanced medical transport and evacuation services for a large-scale disaster.
- Secondary missions include responding to mass casualty incidents, incident support, firefighter rehabilitation, and other appropriate, like missions
- AMBUSs are incorporated into local & regional response plans in addition to being available for a state activation



#### CAPABILITIES

- 24/7 response capable, mobile intensive care capable, vehicle configurable to support up to [20-22] littered patients, or [24-30] seated patients, or a combination thereof [can support wheelchairs & isolets]
- Crew compliment is [6] with a minimum of [4] Paramedic care givers for state mission assignments. (Local / Regional staffing varies by host agency)
- The TX EMTF has [16] AMBUSs pre-positioned with host EMS/FD members



#### TYPING/STAFFING

- AMBUS:  
Custom ambulance, licensed Specialty Vehicle, Mobile Intensive Care Unit [MICU] with advance medical monitoring & equipment, integrated electrical, oxygen & communication systems
- Personnel / Asset Counts
  - [7] Personnel [State Mission Assignment]
  - [6] AMBUS Crew: [4] Paramedic minimum
  - [1] Strike Team Leader
  - Local/regional staffing varies by mission/host agency
- [2] Vehicles
  - [1] AMBUS/MPV
  - [1] EMS CMD Vehicle





# Texas Emergency Medical Task Force

Component Overview



## AST & AMST

[Ambulance & Air Medical Strike Teams]

### MISSION

- Primary mission is to provide medical transport & evacuation services during a large-scale disaster.
- Secondary missions include responding to mass casualty incidents, firefighter rehabilitation, incident support for all hazards, & other appropriate, like missions.
- Strike teams are incorporated into regional response plans in addition to being available for a state activation

### CAPABILITIES

- 24/7 response capable, mobile intensive care / advanced / basic life support ambulances [based upon license & crew credentials]
- A Strike Team is comprised of 5 [ground or air] ambulances led by a Strike Team Leader in an EMS Command vehicle
- Over 300 EMS, Fire, & Air Medical Providers are TX EMTF members, deployable on behalf of the State of Texas
- Each of the [8] EMTF Regions recruits strike teams that provide 35+ deployable teams

### TYPING/STAFFING

- Ground Ambulances:
  - Basic Life Support [BLS]: minimum [2] emergency care attendants
  - Advanced Life Support [ALS]: minimum [1] EMT-Intermediate & [1] EMT-Basic
  - Mobile Intensive Care Unit [MICU]: minimum [1] EMT-Paramedic & [1] EMT-Basic
- Air Ambulances [Rotary/Fixed]:
  - Mobile Intensive Care Unit [MICU]: minimum [1] EMT-Paramedic/ Registered Nurse/ Physician & [1] EMT-Basic; both solely dedicated to patient care



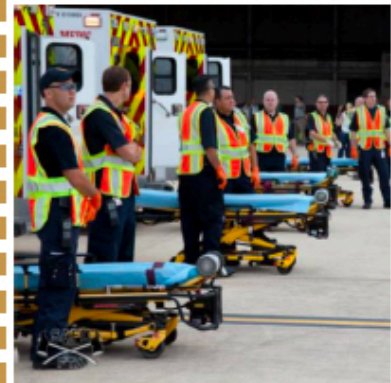
### Personnel / Asset Counts

#### AST:

- [1] Personnel
  - [2] Medics/Ambulance
  - [1] Strike Team Leader
- [6] Vehicles
  - [5] Ground Ambulances
  - [1] EMS CMD Vehicle

#### AMST:

- [1+] Personnel
    - [2] Medics /Aircraft [+Flight Crew\*]
    - [1] Strike Team Leader
  - [6] Vehicles
    - [5] Air Ambulances
    - [1] EMS CMD Vehicle
- \*Flight Crew is aircraft specific







# Texas Emergency Medical Task Force

Component Overview



## MMU

[Mobile Medical Unit]

### MISSION

- Augment & support the needs of a disaster impacted community with temporary healthcare infrastructure that is configurable to the incident.
- Primarily used for the initial triage, treatment, stabilization & transfer purposes but may be used for a variety of other missions. [the MMU is not intended for long term care]

### CAPABILITIES

- 24/7 response asset providing care for a variety of acuity levels while providing triage, treatment, transfer, & or discharge.
- Physical assets to create a self-sufficient, tent & trailer based, field hospital or ER [based upon the number of beds needed].
- Medical equipment, supplies, & a pharmaceutical cache was specifically developed for the MMU.
- Over 175 Hospitals, Healthcare Systems, & Physician Groups provide the deployable team members who actively practice in an acute care setting every day.
- MMUs are pre-positioned in all [8] TX EMTF Regions.

### TYPING/STAFFING

- Typing is dependent upon number of beds, mission duration, & number of patient beds.
- MMU's are typed in [6] scaled personnel & asset packages that range from a team of [5] for [4-8] beds for a single shift/day to a team of [36] for [32+] beds for multi-day, 24/7 operations.
- MMU teams are comprised of team members that are actively practicing in an acute care setting: Physicians, mid-level practitioners, nurses, paramedics, pharmacy & patient care technicians, clerks, communications/IT technicians, & logistics personnel



### Personnel / Asset Counts

Staffing & asset profiles are based upon the number of patient beds & duration of patient care coverage needed

#### [32+] Bed MMU

**Type I** [operational 24/7]

[35-36] Personnel Team

**Type II** [operational 1 Shift/Day]:

[19] Personnel Team

**Type I/II Asset Profile:**

[6-9] MMU Assets; ~40,000ft<sup>2</sup> Site / Area

MMU Tent Structure for 32+ Beds,

53' MMU Command Trailer

MMU Supply, Pharmacy, & Diagnostic Equipment

Caches

[2] Generators [60-125 kW]

Personnel Transport & Shelter

#### [12-16] Bed MMU

**Type III** [operational 24/7]

[20] Personnel Team

**Type IV** [operational 1 Shift/Day]:

[11] Personnel Team

**Type III/IV Asset Profile:**

[4-7] MMU Assets; ~22,500ft<sup>2</sup> Site / Area

MMU Tent Structure for 12-16 Beds

36' MMU Command Trailer

MMU Supply, Pharmacy, & Diagnostic Equipment

Caches

[1] Generator [60 kW]

Personnel Transport & Shelter

#### [4-8] Bed MMU

**Type V** [operational 24/7]

[8] Personnel Team

**Type VI** [operational 1 Shift/Day]:

[5] Personnel Team

**Type V/VI Asset Profile:**

[2-3] MMU Assets; ~15,625ft<sup>2</sup> Site / Area

MMU Tent Structure for 4-8 Beds /

A Building of Opportunity

36' MMU Command Trailer

MMU Supply, Pharmacy, & Diagnostic Equipment

Caches

Personnel Transport & Shelter





# Texas Emergency Medical Task Force

## Component Overview



### MISSION

- To provide surge nursing staff for an Emergency Department or specialty area [ICU, burn unit, etc.] nursing staff, to a disaster inundated or impacted

### CAPABILITIES

- Rapidly deployable, [24/7] statewide response asset
- A strike team is composed of [5] registered nurses able to augment a requesting facility's staffing with credentialed nursing staff.  
[Requested RNST will adhere to requesting facility's disaster credentialing processes & policies]
- Over 175 Hospitals & Healthcare Systems provide the deployable team members who are actively practicing clinicians.
- RNSTs are rostered in all [8] TX EMTF Regions.

### TYPING/STAFFING

- A strike team is staffed with 5 registered nurses of the same specialty with one team member designated as the Strike Team Leader.
- RNSTs are comprised of team members that are actively practicing in the team's designated clinical setting.
  - Current RNSTs include the following specialties:
    - Emergency Department
    - Internal Medicine/Surgical
    - Pediatrics
    - Labor & Delivery
    - Intensive Care Unit
    - Neonatal Intensive Care Unit
    - Burn Unit



### Personnel / Asset Counts

- [5] Personnel
  - [5] Nurses
  - [1] Designated as a Strike Team Leader
- [3] Vehicles





# Texas Emergency Medical Task Force

## Component Overview



### ASMT

[Ambulance Staging Management Teams]

#### MISSION

- Provide management & oversight of the Ambulance Staging Area during an incident.
- The ASMT is responsible for the facilities being utilized, for the accountability of all units & personnel in staging, & logistics support for the resources on site.

#### CAPABILITIES

- Rapidly deployable, 24/7 statewide response asset.
- The ASMT maintains a base camp that provides all the tracking, rehabilitation, & logistics needs for staged units & support personnel to include fuel, medical supplies, medical gas, food, water, hygiene, communications, & maintenance.
- ASMT personnel are selected from our EMS, Fire, & Hospital entities & received specialized training.
- Each of the [8] EMTF Regions recruits & rosters ASMT personnel.

#### TYPING/STAFFING

- Typing is dependent upon the number of units to be staged & the mission duration.
- Staging sites can be set up for a single operational period for [25] or fewer units with [2] personnel / scaled up to a multi-day, [500+] unit site managed by a team of [40] personnel.
- ASMTs are composed of the following positions:
  - Ambulance Staging Managers
    - Vehicle Staging Team Leaders
    - Vehicle Staging Technicians
  - Mission Tasking Team Leaders
    - Mission Tasking & Accountability Technicians
  - Administrative Team Leaders
    - Data Entry & Documentation Technicians
  - Logistics Team Leaders
    - Communications & Logistics Technicians



#### Personnel / Asset Counts

##### [500] Unit Staging Site

Type I [sustained 24/7 OPs]

[40] Personnel Team

Type I Asset Profile:

[20-25] ASMT Assets; ~350,000ft<sup>2</sup> Site / Area

53'-36" Command Trailer

40' Staging Support Unit: Check-in/out

Trailer/CONEX, Support Cache, Skid Steer, Cones

[2-4] Generators [60-200 kW]; [8-12] Light Towers

[2-4] All Terrain/Utility vehicles

ADMIN, Parking, & COMM Packages

ASMT Personnel Transport

~1300 Responders Shelter

##### [250] Unit Staging Site

Type II [sustained 24/7 OPs]

[26] Personnel Team

Type II Asset Profile:

[15-20] ASMT Assets; ~200,000ft<sup>2</sup> Site / Area

53'-36" Command Trailer

40' Staging Support Unit: Check-in/out

Trailer/CONEX, Support Cache, Skid Steer, Cones

[2] Generators [60-200 kW]; [4-8] Light Towers

[2-3] All Terrain/Utility vehicles

ADMIN, Parking, & COMM Packages

ASMT Personnel Transport

~650 Responders Shelter

##### [125] Unit Staging Site

Type III [sustained 24/7 OPs] / [single OP]:

[14] Personnel Team. / [6] Personnel Team

Type III Asset Profile:

[10-18] ASMT Assets; ~100,000ft<sup>2</sup> Site / Area

53'-36" Command Trailer

40' Staging Support Unit: Check-in/out

Trailer/CONEX, Support Cache, Skid Steer, Cones

[2] Generators [60-200 kW]; [4-8] Light Towers

[2] All Terrain/Utility vehicles

ADMIN, Parking, & COMM Packages

ASMT Personnel Transport

~330 Responders Shelter

##### [25] Unit Staging Site

Type IV [sustained 24/7 OPs] / [single OP]:

[6] Personnel Team / [3] Personnel Team

Type IV Asset Profile:

[7-12] ASMT Assets; ~30,000ft<sup>2</sup> Site / Area

36' Command Trailer

[1] Generators [60kW]; [2-4] Light Towers

ADMIN, Parking, & COMM Packages

ASMT Personnel Transport

~100 Responders Shelter







# Texas Emergency Medical Task Force

Component Overview



## MIST

[Medical Incident Support Teams]

### MISSION

- Trained acute healthcare leadership providing Health and Medical subject-matter expertise & support to local jurisdictions, healthcare facilities & local health care infrastructure during disasters.

### CAPABILITIES

- Rapidly deployable, 24/7 statewide response asset.
- MIST deploy to impacted emergency & medical operations centers, & DDCs to provide integrated ESF-8 [Public Health & Medical] support to authorities, government agencies, hospitals, & state, regional, / local response partners during incidents.
- MIST personnel are selected & received specialized training. TX EMTF MIST members come from the leadership of EMS, Fire, & Hospital member entities.
- Each of the [8] EMTF Regions rosters MIST personnel.

### TYPING/STAFFING

- Staffing is based upon personnel needs by location & are typed as teams of [2] or [6] personnel, [1] of which is designated as the Team Leader.
- MIST personnel come from all component & mission profiles to cover the full spectrum of ESF-8 activations the TX EMTF responds to.
  - Specialized components / mission profiles include but are not limited to:
    - TX EMTF Overhead Team staff
    - Incident command posts & emergency & medical operations center liaisons / support
    - Wildland fire support
    - Hospital, nursing home, / assisted living center evacuations
    - Infectious disease response
    - Mass fatality response, etc.



### Personnel / Asset Counts

#### Type I:

- [6] Personnel
  - [1] MIST Leader
  - [5] MIST
- [3-4] Vehicles
  - EMS CMD / SUV type
  - COMM Package
  - Remote Office Package

#### Type II:

- [2] Personnel
  - [1] MIST Leader
  - [1] MIST
- [1-2] Vehicles
  - EMS CMD / SUV type
  - COMM Package
  - Remote Office Package





# Texas Emergency Medical Task Force

## Component Overview



### MISSION

- Provide operational assistance to medicolegal authorities with incident site, deployable morgue, victim identification center, & victim information center operations following a mass fatality incident that overwhelms a local jurisdiction.

### CAPABILITIES

- Available statewide as an activated, 24/7 response asset
- TMORT is composed of [4] teams that can deploy independently or all at once on behalf of the State:
  - Incident Site Team (IST):** Conduct scene investigations to locate, document, & recover human remains & personal effects. **Staffing:** Human Remains Recovery, Mapping, & Evidence Tracking Specialists
  - Morgue Operations Team (MOT):** Conduct disaster morgue operations to examine human remains. **Staffing:** Admitting, Triage, Storage, Personal Effects, Photographers, Radiographers, Pathologists, Autopsy Assistants, Dentists, Anthropologists, DNA & Fingerprint Specialists, & Exit Review. [Disaster Portable Morgue Unit is maintained by SETRAC in Houston]
  - Identification Review Team (IRT):** Compares antemortem & postmortem data to identify human remains. **Staffing:** Dependent on the ID methods used, & could include Anthropologists, DNA Scientists, Fingerprint Analysts, Pathologists, Odontologists, &/or Death Investigators.
  - Victim Information Center Team (VICT):** Conducts family interviews, gathers antemortem data, & collects DNA samples. **Staffing:** Family Interviewers, Records Collection & Management, Personal Effects, & DNA Reference Collectors.
- TMORT will collaborate with jurisdictions in the set-up of Family Assistance Centers [FAC] however, FAC staffing & operations are the jurisdiction's responsibility.
- Medical examiners' offices, academic institutions, & private entities provide the deployable team members for the TMORT.

### TYPING

- Matrix for determining TMORT team requests: [scaled & typed by fatality count & incident variables]

Type I	Type I	Type II	Type II	Multiple Locations
Type I	Type I	Type II	Type III	Contaminated
Type I	Type I	Type II	Type III	Charred
Type I	Type I	Type II	Type IV	Fragmented, Commingled
Type I	Type II	Type III	Type IV	Intact, Visually Recognizable
Est. 100 fatalities	Est. 50 fatalities	Est. 25 fatalities	Est. 10 fatalities	



### Personnel / Asset Counts

Staffing & asset profiles are typing dependent. Each team has [4] scaled teams typed.

#### Type I Teams:

IST: [25] Personnel / [8-14] Assets  
 MOT: [41] Personnel / [8-13] Assets  
 IRT: [7] Personnel / [2-3] Assets  
 VICT: [29] Personnel / [6-7] Assets

#### Type II Teams:

IST: [17] Personnel / [7-13] Assets  
 MOT: [28] Personnel / [7-11] Assets  
 IRT: [5] Personnel / [2-3] Assets  
 VICT: [16] Personnel / [4-5] Assets

#### Type III Teams:

IST: [15] Personnel / [4-9] Assets  
 MOT: [21] Personnel / [5-9] Assets  
 IRT: [5] Personnel / [2-3] Assets  
 VICT: [10] Personnel / [2-4] Assets

**Type IV Teams:** all teams [1-2] Personnel / [1] Asset





# Texas Emergency Medical Task Force

## Component Overview



### IDRU

[Infectious Disease Response Unit]

#### MISSION

- Augment & support the needs of the hospital and regional emergency healthcare system with the care, transport, & or transfer of patients with a high consequence infectious disease [HCID].

#### CAPABILITIES

- Rapidly deployable, 24/7 statewide response asset.
- IDRU teams staffed with qualified pre-hospital & hospital providers with specific training to state-wide standard PPE caches, capable of caring for & transporting a patient with a HCID anywhere in the state.
- Caches pre-positioned in all [8] TX EMTF Regions:
  - [8] Pre-Hospital Transport Caches; [1] in each TX EMTF Region
  - [13] Hospital Augmentation Support Caches
  - [8] 24-HR Caches; [1] in each TX EMTF Region
  - [4] 72-HR Caches; in El Paso, Arlington, San Antonio, & Houston
  - [1] 10-Day Cache; in San Antonio

#### TYPING/STAFFING

- IDRU Hospital Augmentation, EMS Transport, & Cache Management teams are comprised of:
  - Pre-Hospital Transport Team:
    - Group Supervisor, Medical Incident Support Team [MIST], Physician, Paramedics, & EMTs, HAZMAT Technicians \*
  - Hospital Augmentation Team:
    - Group Supervisors, Medical Incident Support Team [MIST], Physicians, Registered Nurses, Paramedics, & Logistics Specialists \*
  - Cache Management Team:
    - Medical Incident Support Team [MIST], Logistics Specialists, & IDRU PPE Trainers
    - \* Respiratory Technicians & Infectious Disease subject matter experts will be available virtually & to respond as requested
- ALL IDRU team members, at a minimum, attend TX EMTF IDRU Didactic training.



#### Personnel / Asset Counts

##### Pre-Hospital Transport Team:

- [14] Personnel / [9] Assets
- Nearest Transport Cache
- [1] HAZMAT Vehicle w/DECON capability
- [2] ALS/MICU Ambulances
- [2] EMS CMD Vehicles
- [2] Personnel Transport Vehicles
- [1] Box Truck

##### Hospital Augmentation Team:

- [16] Personnel / [7] Assets
- Nearest 24-HR Hospital Augmentation Cache;
- 72-HR Cache on ALERT;
- 10-Day Cache on STANDBY
- [1] MIST/CMD Vehicle
- [4] Personnel Transport Vehicles
- [1] Box Truck

##### Cache Management:

- [6] Personnel / [3] Assets
- [1] MIST/CMD Vehicle
- [1] Personnel Transport Vehicle
- [1] Box Truck







# Texas Emergency Medical Task Force

Component Overview



**WLFS\***  
[Wildland Fire Support Unit]

## MISSION

- Provide dedicated medical response & force protection teams & assets for firefighters responding to moderate to large scale wildland fires.
  - Integrated teams & assets from the fire-line to staging & base camps to incident command posts.

## CAPABILITIES

- A suite of teams & assets, both new & pre-existing, support the WLFS mission;
  - Pre-existing TX EMTF components that support this mission: AMBUSs, Ambulance Strike Teams [air (AMST) & ground (AST)], Medical Incident Support Teams [MIST], & Mobile Medical Units [MMU]
  - WLFS elements specific to this component: Wildland Paramedic Units [WPU]; Rapid Extraction Module [REM]
  - Medical Unit Leader [MEDL] cross-trained MIST

## TYPING/STAFFING

- Wildland Paramedic Units [WPU]:**
  - [2] Paramedics, mobile [4X4 SUV&/ATV], ALS capable
  - WPUs operate just behind the fire-line, in close proximity to working fire crews to provide rapid ALS level care to firefighters
  - S-130 & S-190 qualified w/ appropriate Wildland Fire PPE
- Rapid Extraction Module [REM]:**
  - [4] Rescue Technician Paramedics, ALS capable, mobile [4X4 SUV&/ATV] with technical rescue gear
  - REMs operate near the fire-line, in close proximity to working fire crews in rough terrain to facilitate rapid access, extraction, & care for injured/ill firefighters
  - S-130 & S-190 qualified w/ appropriate Wildland Fire PPE, Rope Rescue Technician, & S-270 & S-271
- Medical Unit Leader [MEDL]:**
  - MIST w/ wildland fire experience
  - MEDLs operate in operations centers and incident command posts assisting & coordinating the incident Medical Plan
  - S-359 Medical Unit Leader training



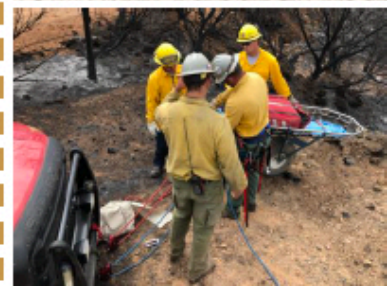
## Personnel / Asset Counts

Staffing & asset profiles are based upon the number of responders, duration of the operational periods, & size, scope, & characteristics of the incident

**WPU:** [2] Paramedics  
[1-2] Vehicles  
[1] EMS CMD Vehicle [4X4]  
[1] All-Terrain Vehicle

**REM:** [4] Rescue Tech Paramedics  
[2-3] Vehicles  
[1-2] EMS CMD Vehicle [4X4]  
[1] All-Terrain Vehicle

**MEDL:** [2] MIST members  
[1-2] Vehicles  
[1-2] EMS/SUV CMD Vehicle



\*WLFS is a developing component